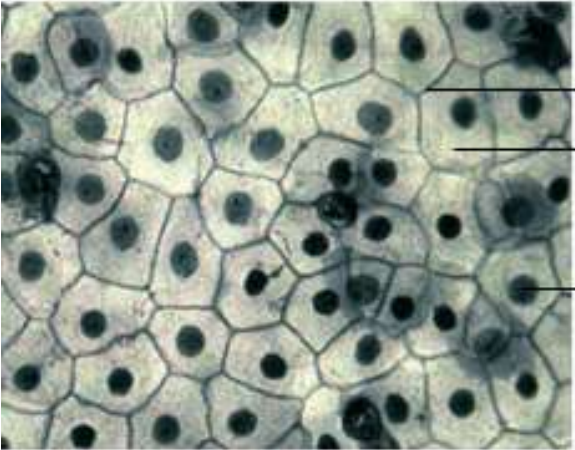
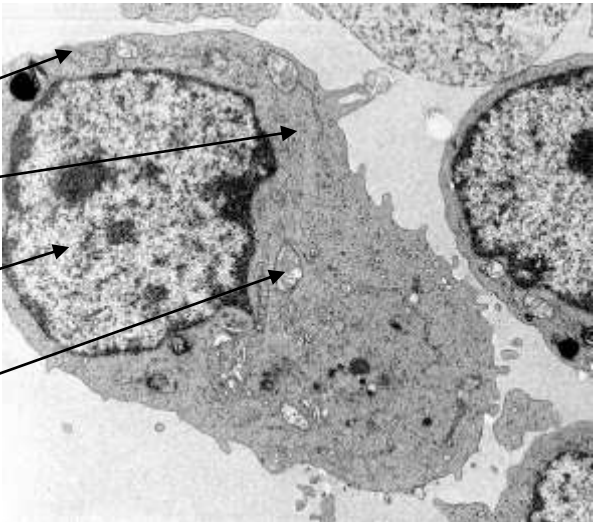


Epiderme de grenouille :



30 µm

- membrane
- cytoplasme
- noyau
- mitochondrie

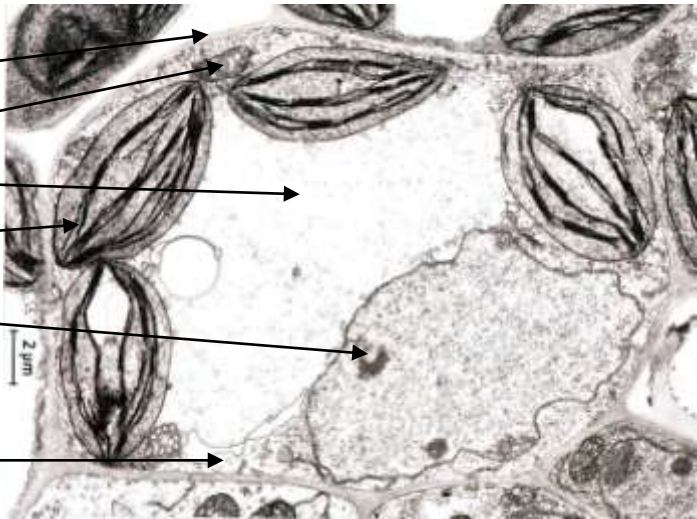


Feuille d'élodée :

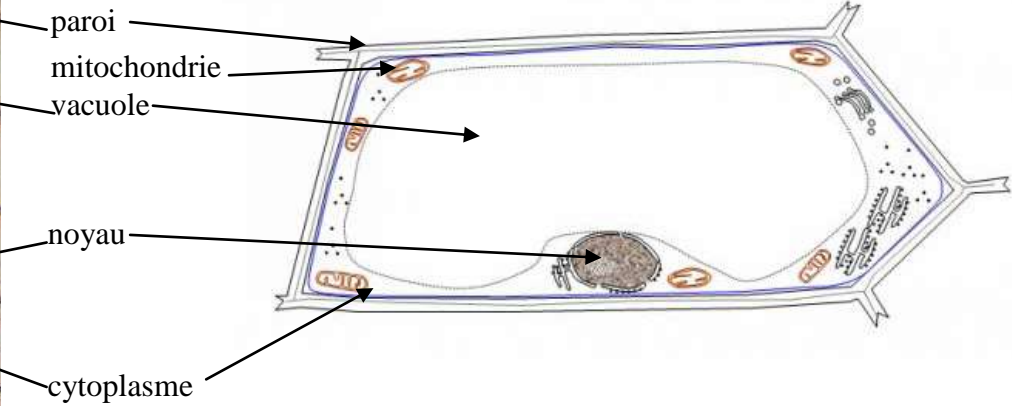
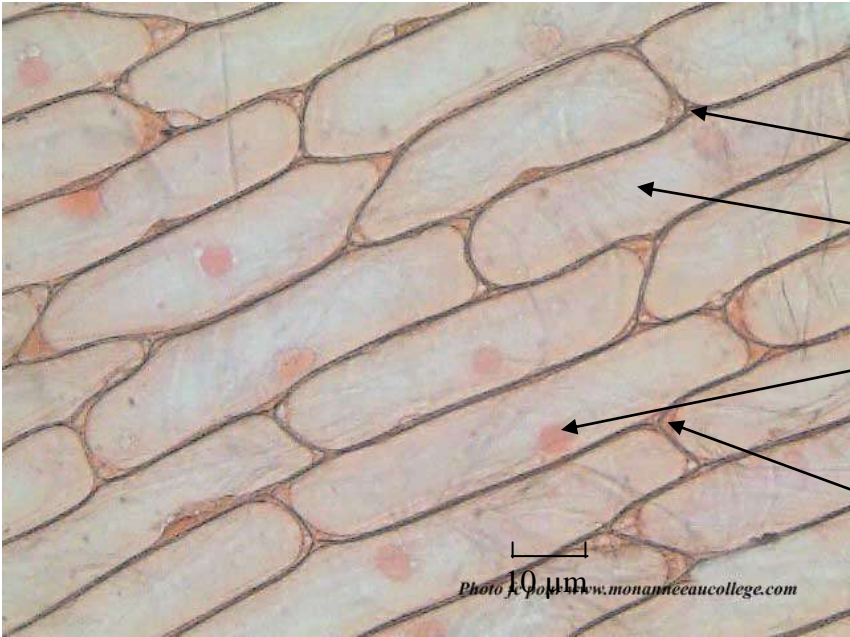


50 micromètres

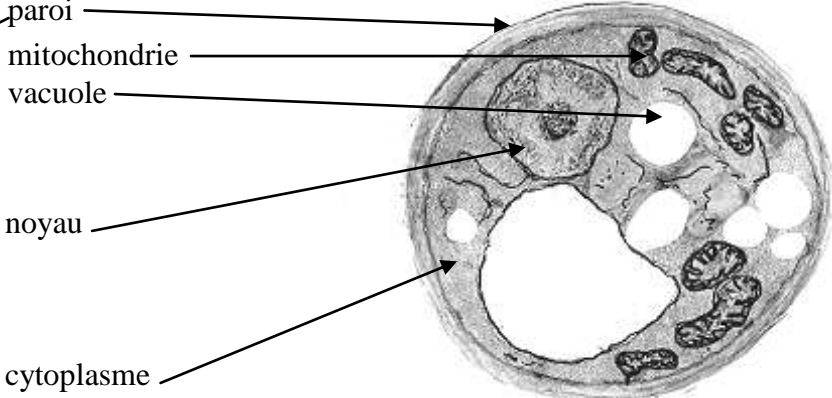
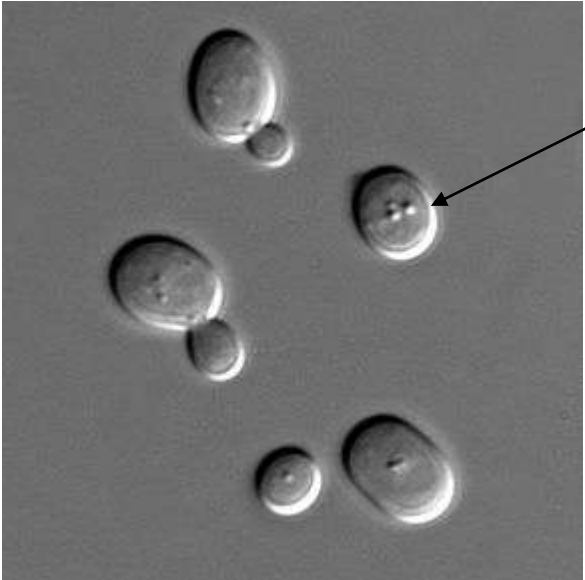
- paroi
- mitochondrie
- vacuole
- chloroplaste
- noyau
- cytoplasme



Epiderme d'oignon :



Levure :
(p38)



Bactérie du fromage : (p41)

